

••• ROLAND R-05 SMART GUIDE •••



BASIC SETUP

- put in batteries + SD card
 - power up recorder
 - press MENU
- use the REC button controls to select and set most important menu items

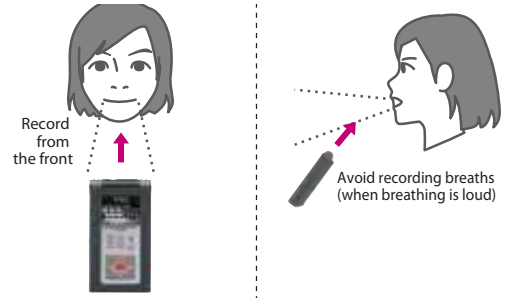
- 1. Recorder Setup
 - sample rate: 41.1 kHz
 - rec mode: WAV 24 bit
 - File Name: Date (it will be easier to identify files .)
- 5. Power Manage
 - set battery types
- 6. Input Setup
 - Rec Monitor SW = ON
 - Ext Mic Type= Stereo or Mono
- 8. Date / Time - set
- 9. SD card - format

Press Menu twice to quit

RECORDING (wear headphones)

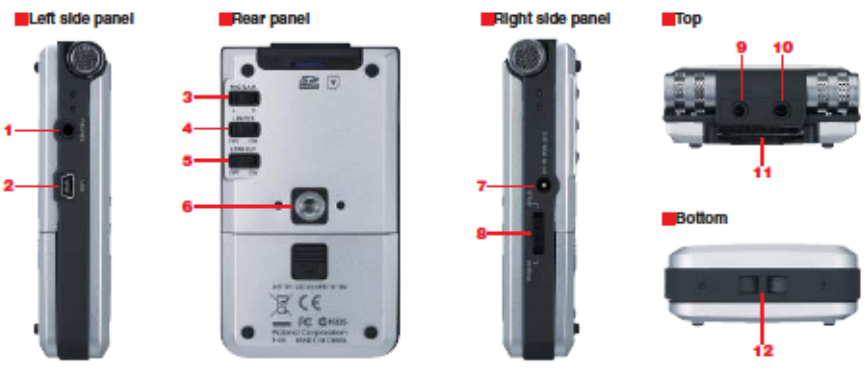
- Press the REC button to go into pause
- adjust the input levels while the red light flashes
- ideal levels are between 12dB and -6dB
- press REC to start recording

RECORDING VOICE



- Hold the Roland 2 to 3 inches below the chin.
 - This will reduce popping and ssss sounds.
 - Have your subject speak in a normal voice.
 - Adjust the Input Level

BACK OF RECORDER SWITCHES



1. HEADPHONE Jack
2. USB connector
3. MIC GAIN switch (LOW/HIGH)
4. LIMITER/AGC switch
5. LOW CUT switch (ON/OFF)
6. Tripod mounting socket
7. AC ADAPTOR Jack
8. POWER/HOLD switch
9. LINE IN Jack
10. MIC INPUT Jack
11. SD card slot
12. Hook for strap

- MIC GAIN - use High for voice
- LIMITER - use for very loud sounds
- LOW CUT - reduces rumble and bass